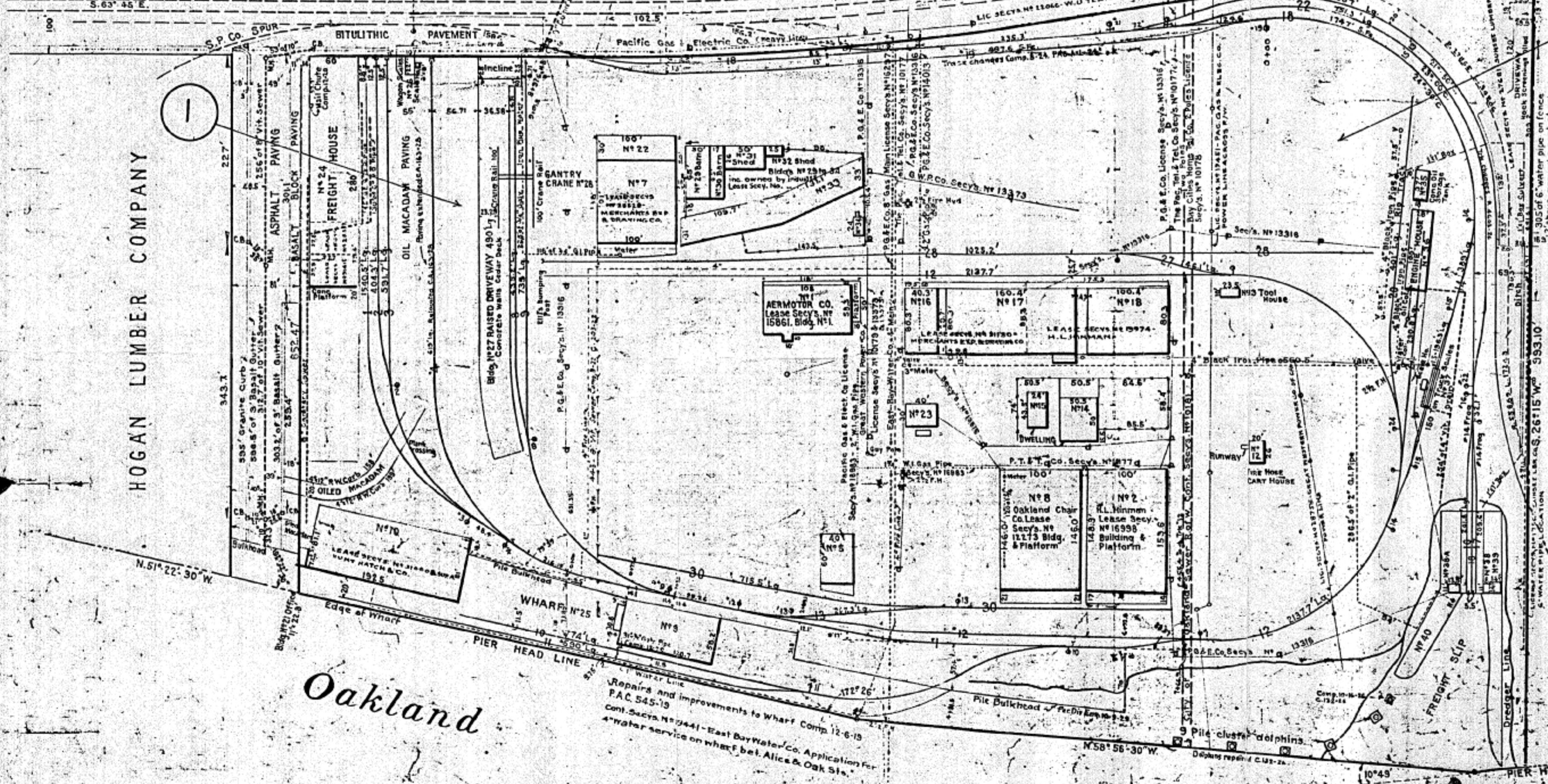


HOGAN LUMBER COMPANY

SUNSET LUMBER COMPANY



Deed Secy's No 4776 & 4777 conveying Adams Wharf Property about 30 Ac. to Santa Fe Land Improvement Co.
 Deed Secy's No 4778 City of Oakland Ord. No 312 N.S. defines E. of First St.
 Deed Secy's No 6029 S.F.L.I. Co. transferring above 30 Ac. to The C.A. & S.F. Ry.

Cont. Secy's No 12128 Pac. Gas & Elect. Co. current for lighting Adams Wharf
 . . . 15416 at First & Alice Sts.
 . . . 15418 at Fallon St.
 . . . 15419 power purposes Adams Wharf
 . . . 15420 at Alice Sts.
 16046 Dredging in front of wharf to be done by Ry. Co. City to repay Ry. Co. for same out of tolls collected at wharf.

THE A. T. AND S. F. RY. CO.
 COAST LINES
 TERMINAL DIVISION
**OAKLAND WHARF PROPERTY AT
 OAKLAND, CAL.**

LBS ANGELES, CAL. DEC. 31, 1919
 SCALE 1 IN. TO 100 FT.
 C. E. C. L. NO. 187-11 021

R. B. BALL
 CHIEF ENGINEER

Revised as to Lease: 2-6-20

Oakland

Estuary

Traced from Ass't Engr's Drawg. 100-2173